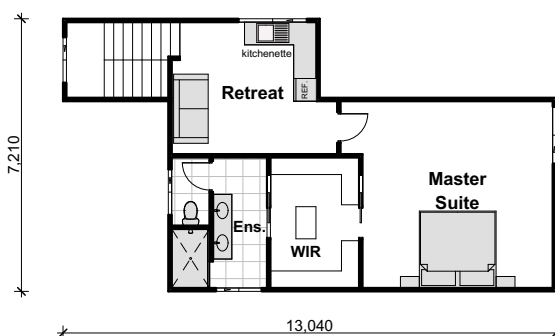
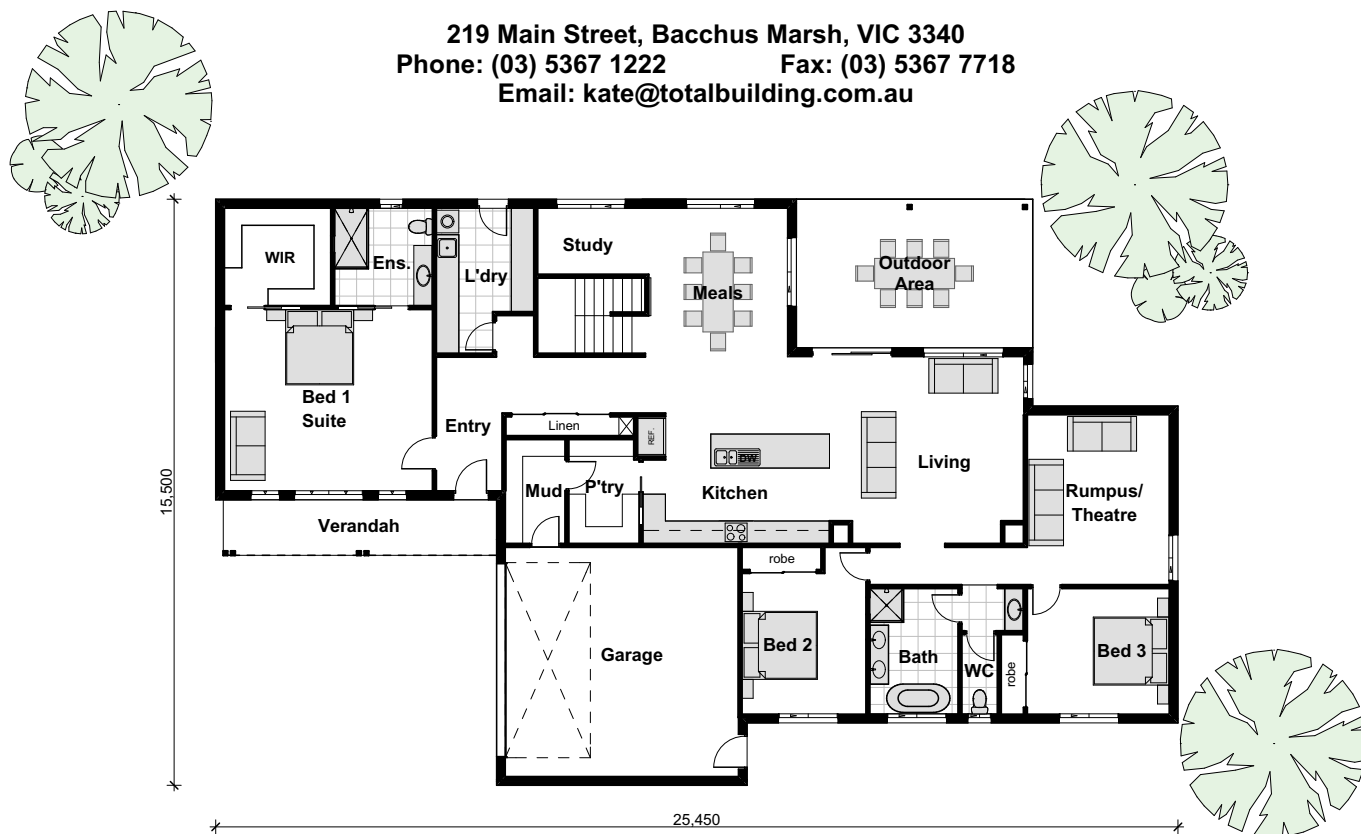




TOTAL BUILDING

219 Main Street, Bacchus Marsh, VIC 3340
 Phone: (03) 5367 1222 Fax: (03) 5367 7718
 Email: kate@totalbuilding.com.au



'Wyatt'

Area		
Ground Floor	233.3m ²	21.7sq's
Upper Floor	67.0m ²	7.2sq's
Garage	40.7m ²	4.4sq's
Outdoor	24.6m ²	2.6sq's
Porch	10.6m ²	1.1sq's
Total	376.1m ²	40.5sq's

"This plan is copyright and is for the sole use of
 Total Building Developments and Design Pty Ltd"